

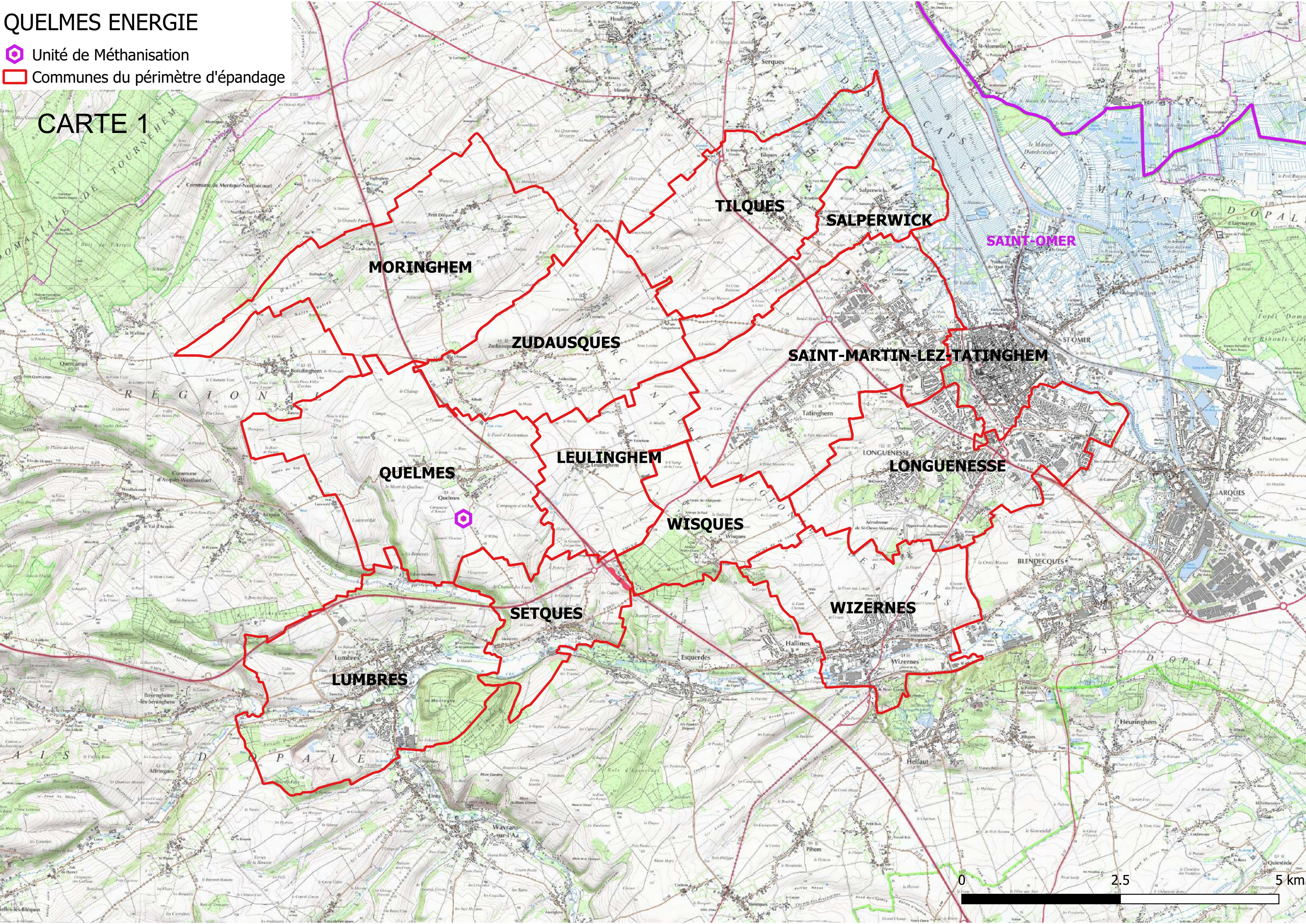






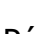



QUELMES ENERGIE

-  Unité de Méthanisation
-  Communes du périmètre d'épandage

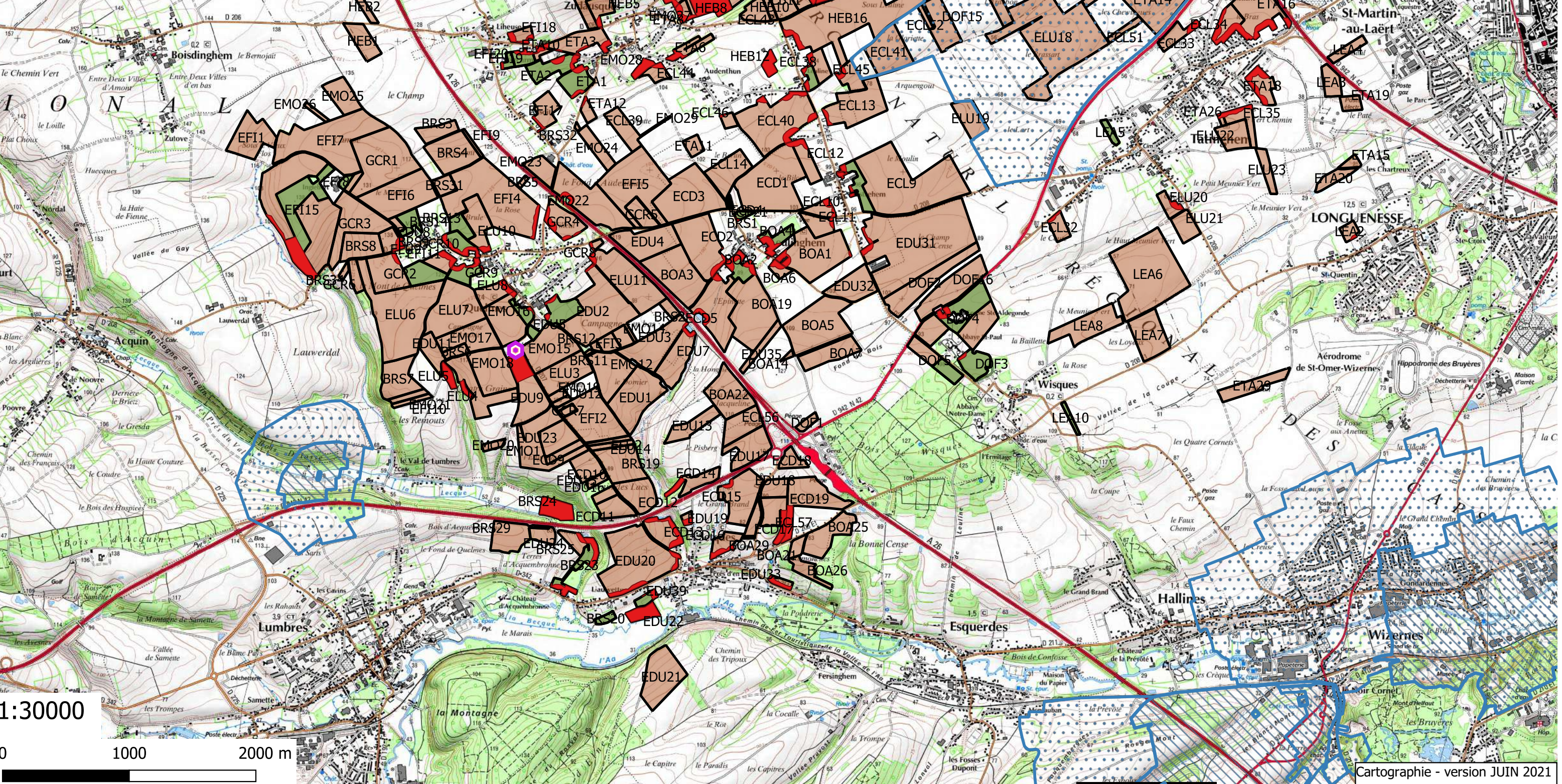
CARTE 1







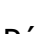



QUELMES ENERGIE

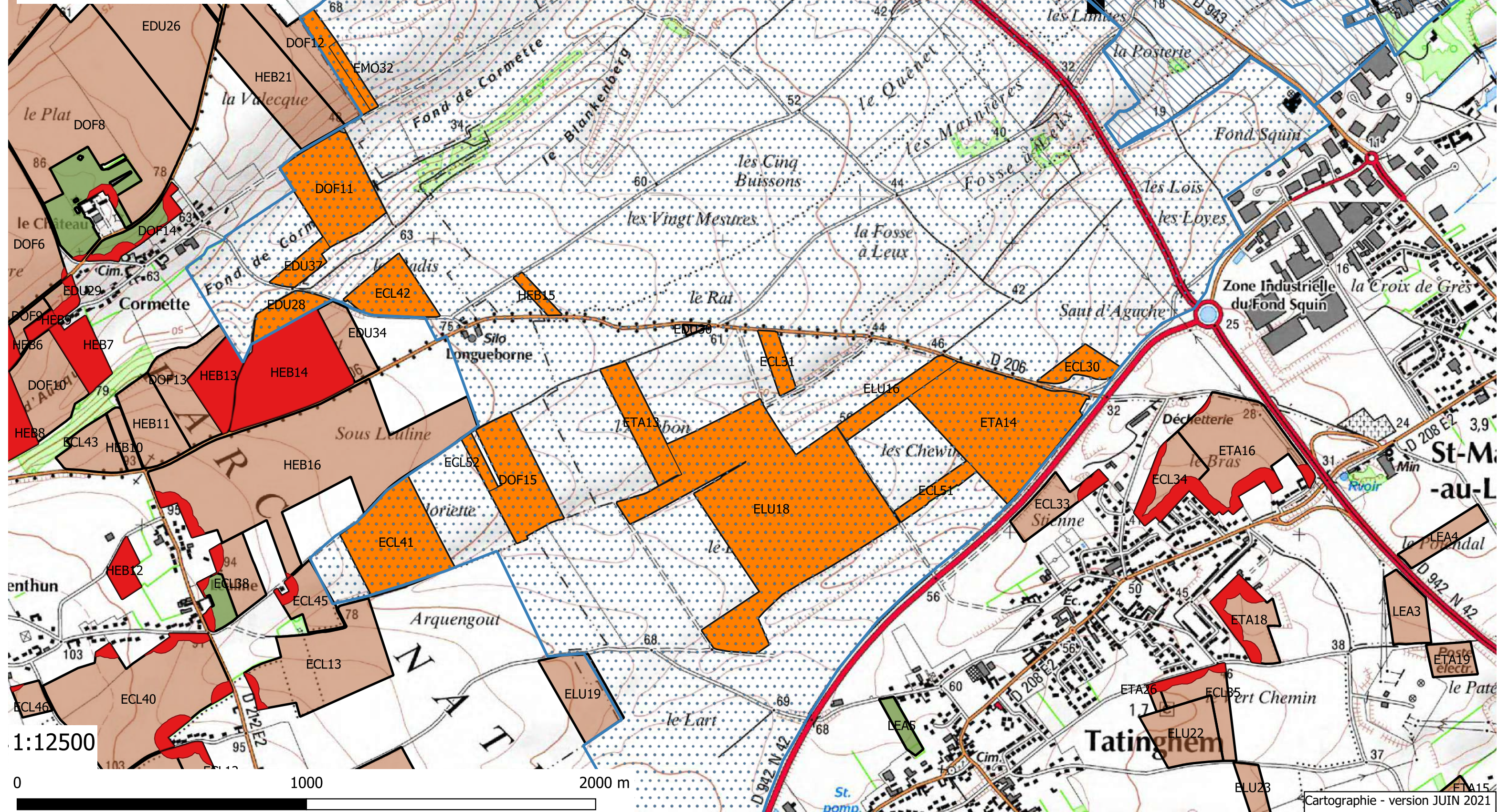
-  Unité de Méthanisation
-  Parcellaire en Terres Labourables
-  Parcellaire en Prairies
-  Surfaces Non Eposables
-  Périumètre de Protection de Captage
-  Eloigné
-  Rapproché
-  Immédiat

CARTE 2 - 1/2



Ilots en périmètres éloignés des captages de Salperwick et Tilques






-  Unité de Méthanisation
-  Parcellaire en Terres Labourables
-  Parcellaire en Prairies
-  Surfaces Non Eposables
-  Périmètre de Protection de Captage
-  Eloigné
-  Rapproché
-  Immédiat



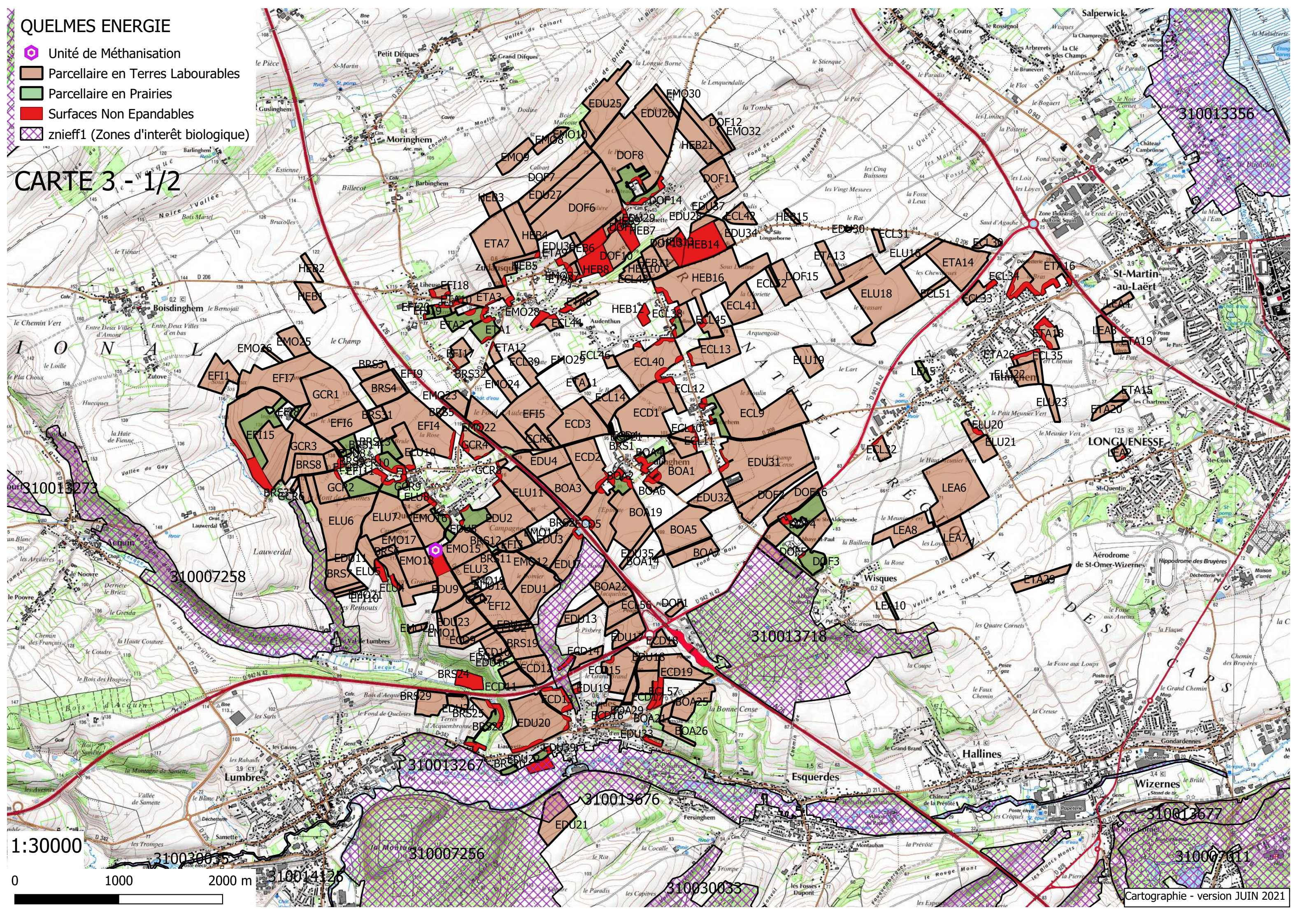
1:12500

0 1000 2000 m

QUELMES ENERGIE






-  Unité de Méthanisation
-  Parcellaire en Terres Labourables
-  Parcellaire en Prairies
-  Surfaces Non Epanrables
-  znieff1 (Zones d'intérêt biologique)

CARTE 3 - 1/2

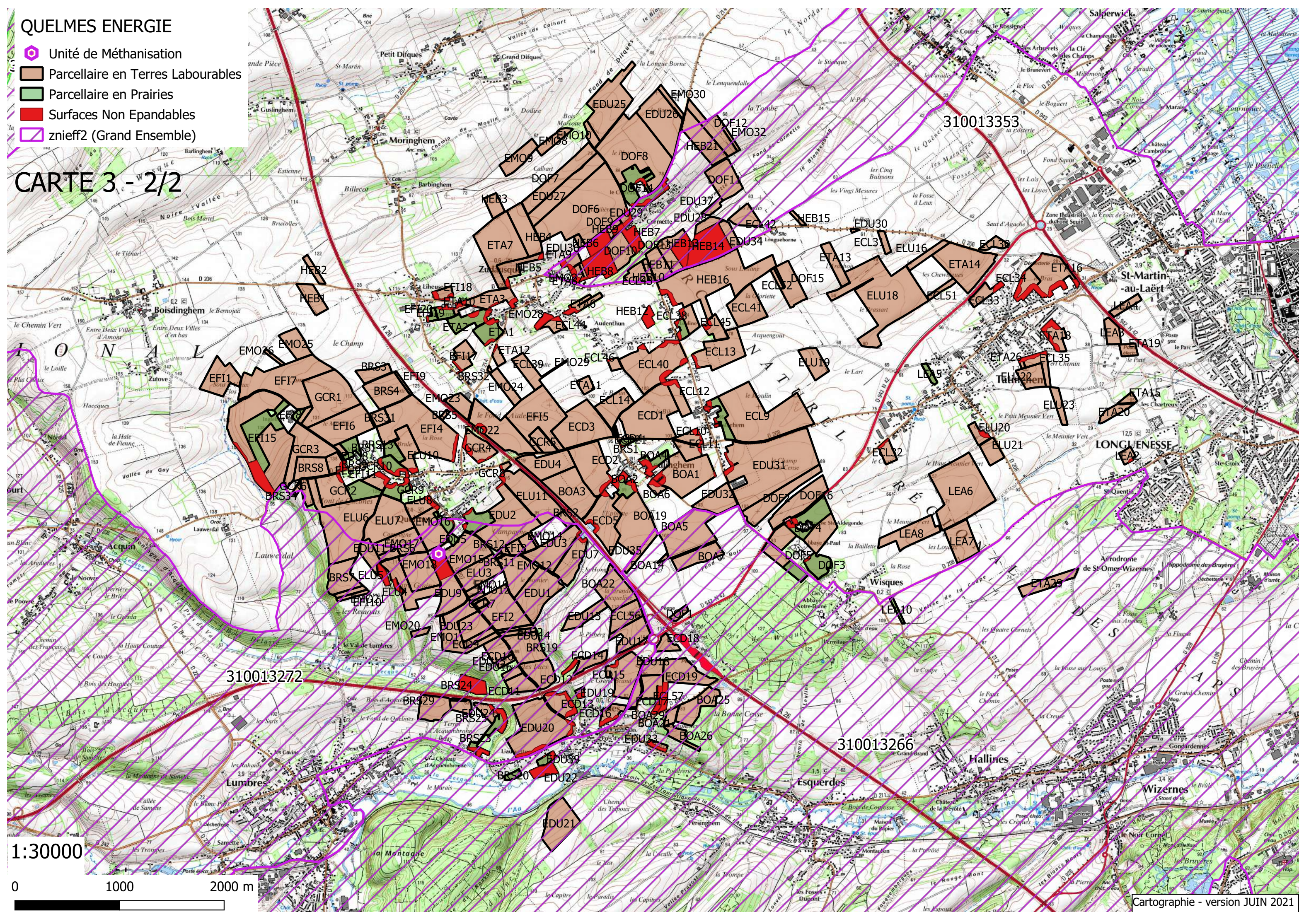


1:30000
0 1000 2000 m

QUELMES ENERGIE






-  Unité de Méthanisation
-  Parcellaire en Terres Labourables
-  Parcellaire en Prairies
-  Surfaces Non Eposables
-  znieff2 (Grand Ensemble)

CARTE 3 - 2/2



1:30000
0 1000 2000 m

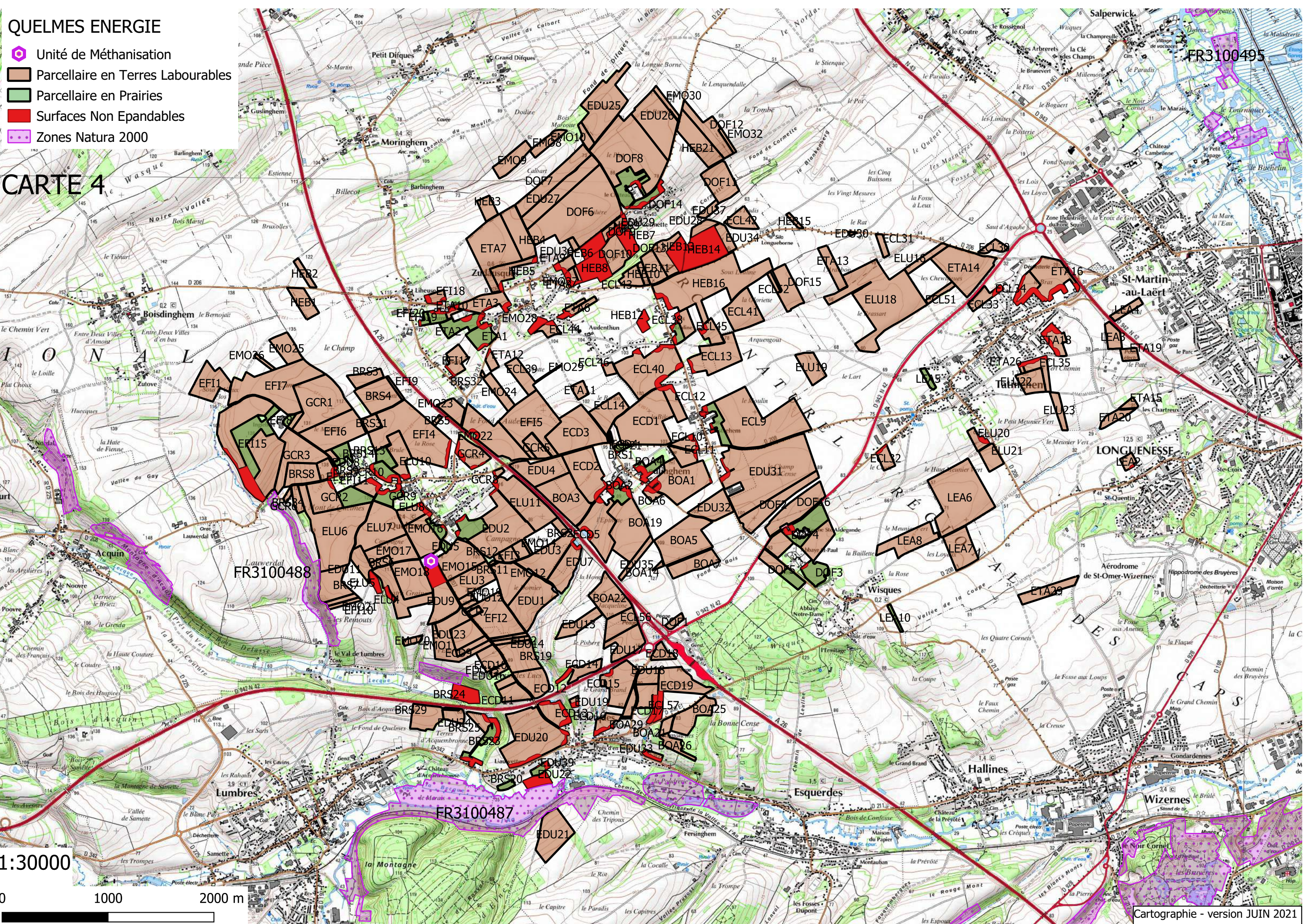
QUELMES ENERGIE

-  Unité de Méthanisation
-  Parcellaire en Terres Labourables
-  Parcellaire en Prairies
-  Surfaces Non Eposables
-  Zones Natura 2000






CARTE 4

1:30000

0 1000 2000 m



QUELMES ENERGIE

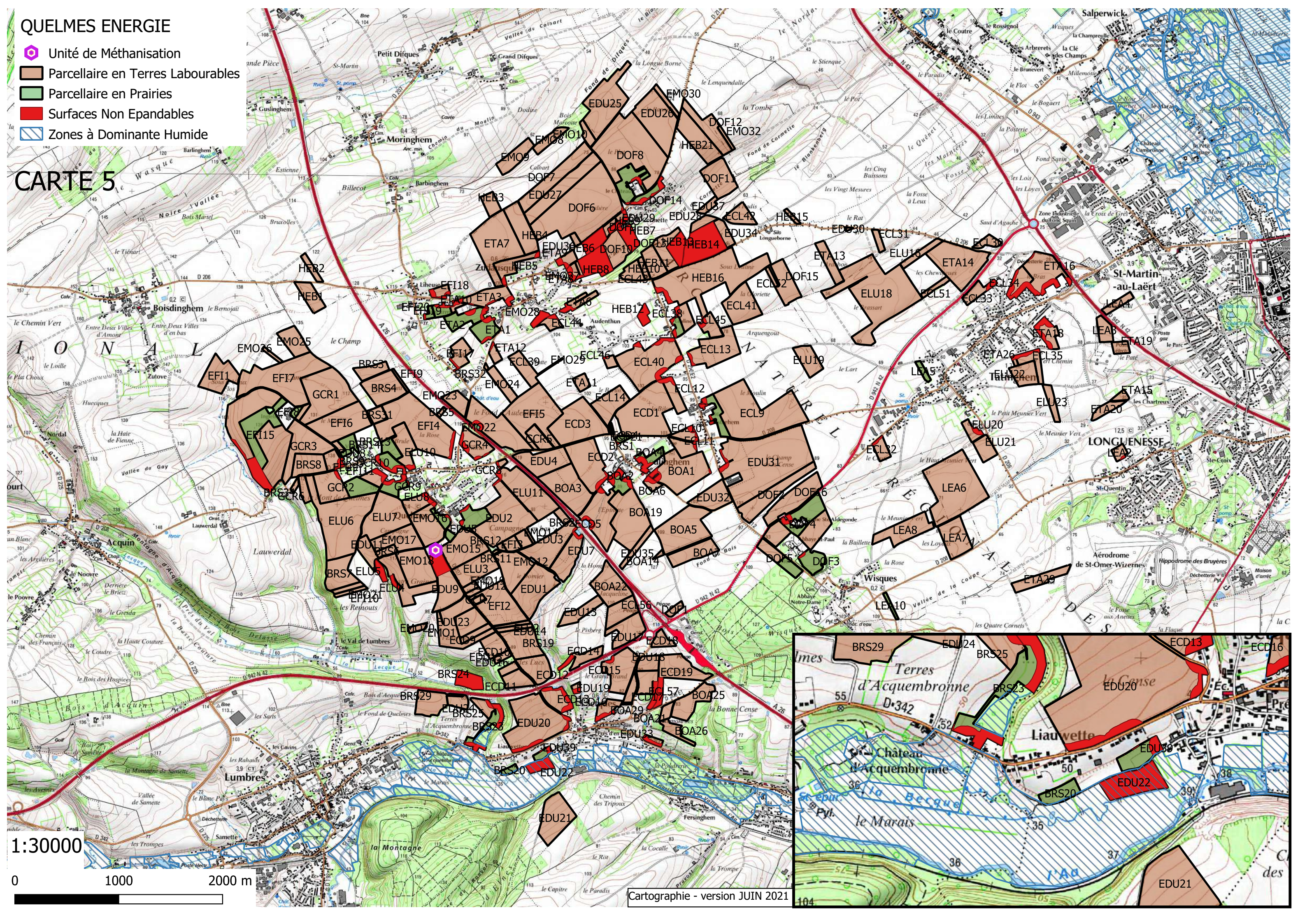
-  Unité de Méthanisation
-  Parcellaire en Terres Labourables
-  Parcellaire en Prairies
-  Surfaces Non Eposables
-  Zones à Dominante Humide

CARTE 5






1:30000

0 1000 2000 m

Cartographie - version JUIN 2021



QUELMES ENERGIE

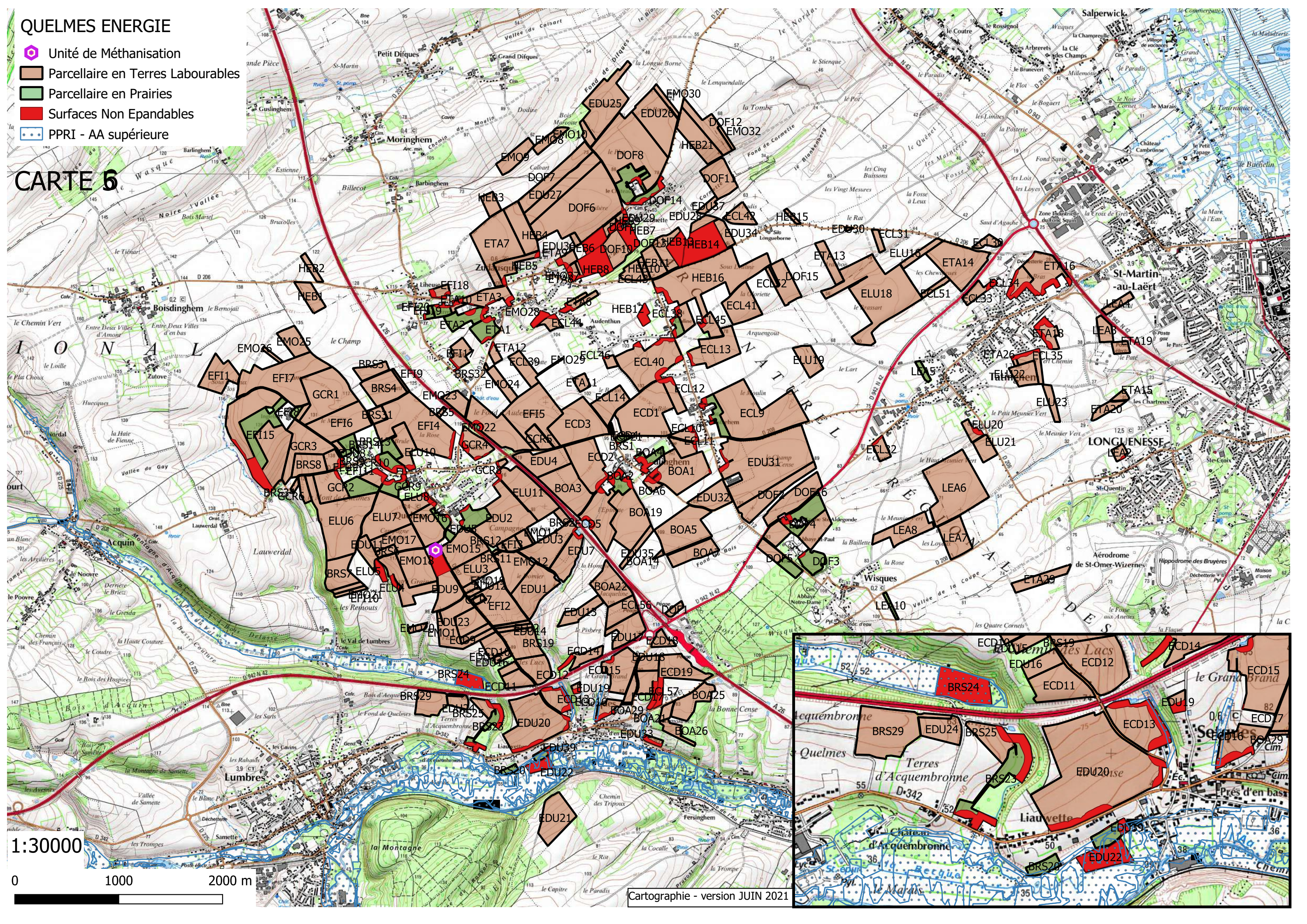
-  Unité de Méthanisation
-  Parcelle en Terres Labourables
-  Parcelle en Prairies
-  Surfaces Non Eposables
-  PPRI - AA supérieure

CARTE 6






1:30000

0 1000 2000 m

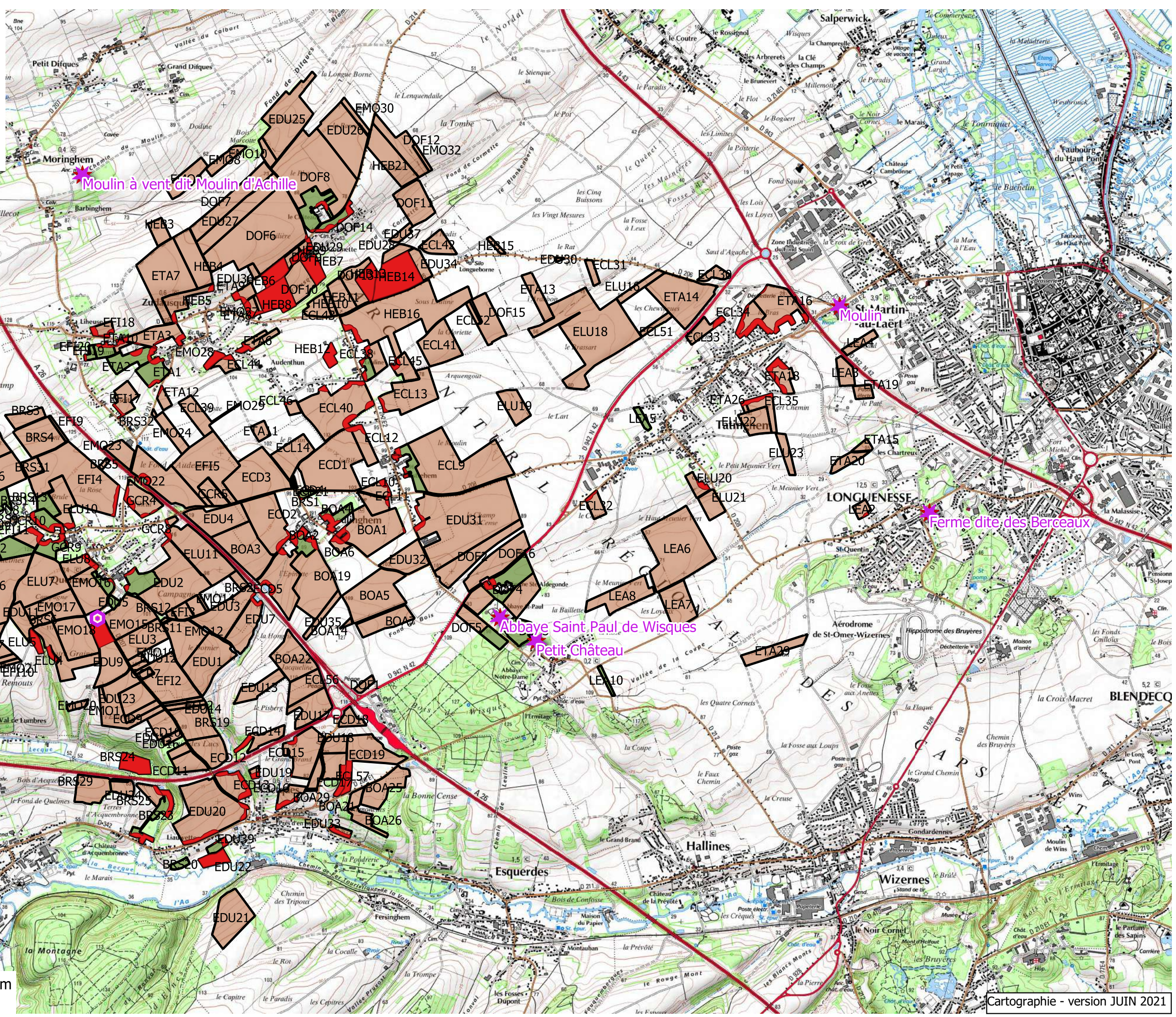
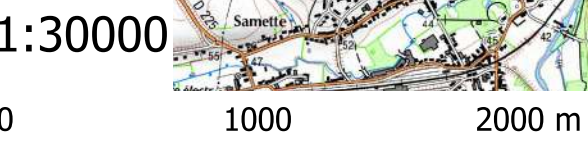
Cartographie - version JUIN 2021










QUELMES ENERGIE

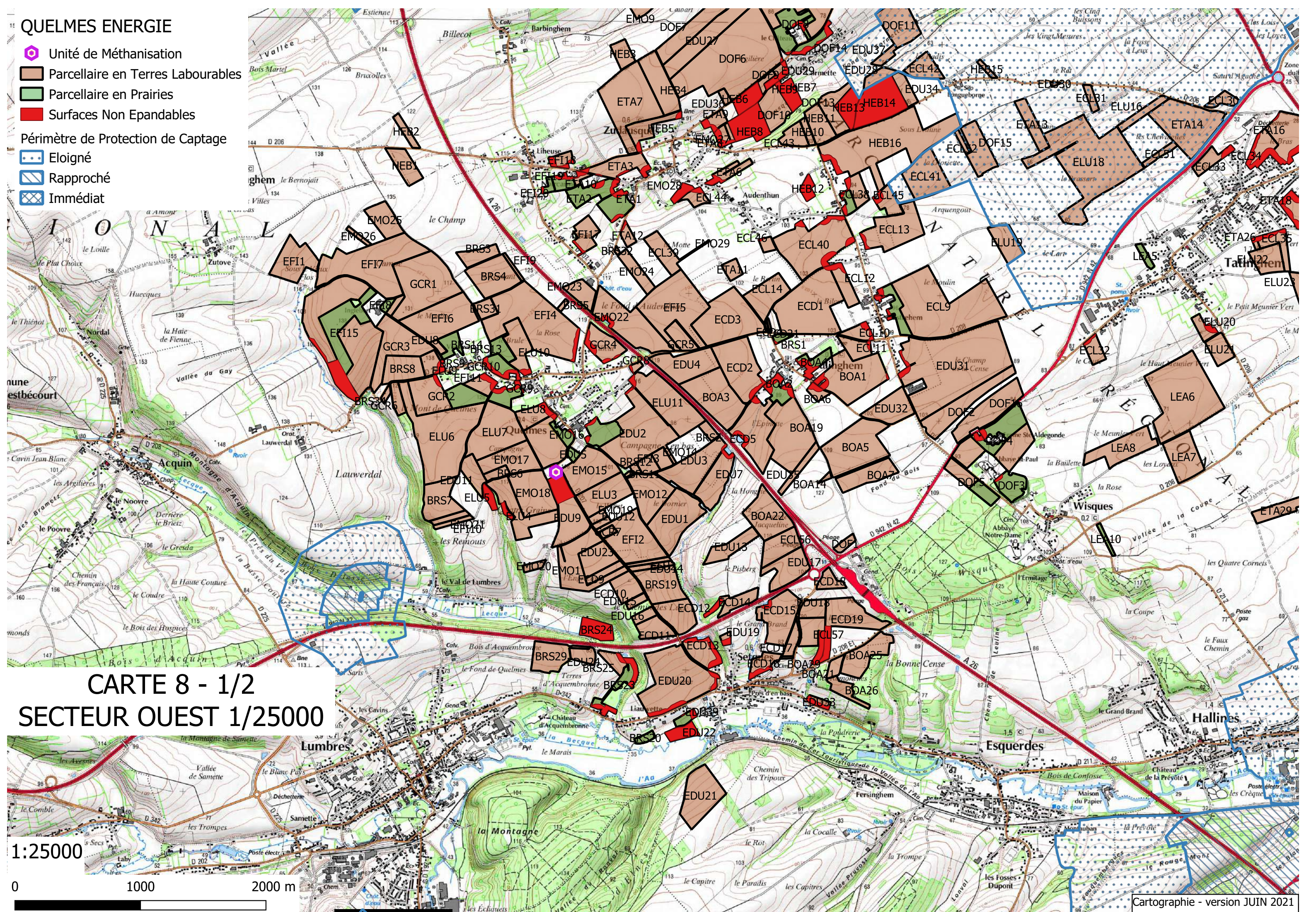
-  Unité de Méthanisation
-  Parcellaire en Terres Labourables
-  Parcellaire en Prairies
-  Surfaces Non Eposables
-  Monuments Historiques

CARTE 7



QUELMES ENERGIE

-  Unité de Méthanisation
-  Parcellaire en Terres Labourables
-  Parcellaire en Prairies
-  Surfaces Non Eposables
- Périmètre de Protection de Captage**
 -  Eloigné
 -  Rapproché
 -  Immédiat





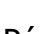





CARTE 8 - 1/2
SECTEUR OUEST 1/25000

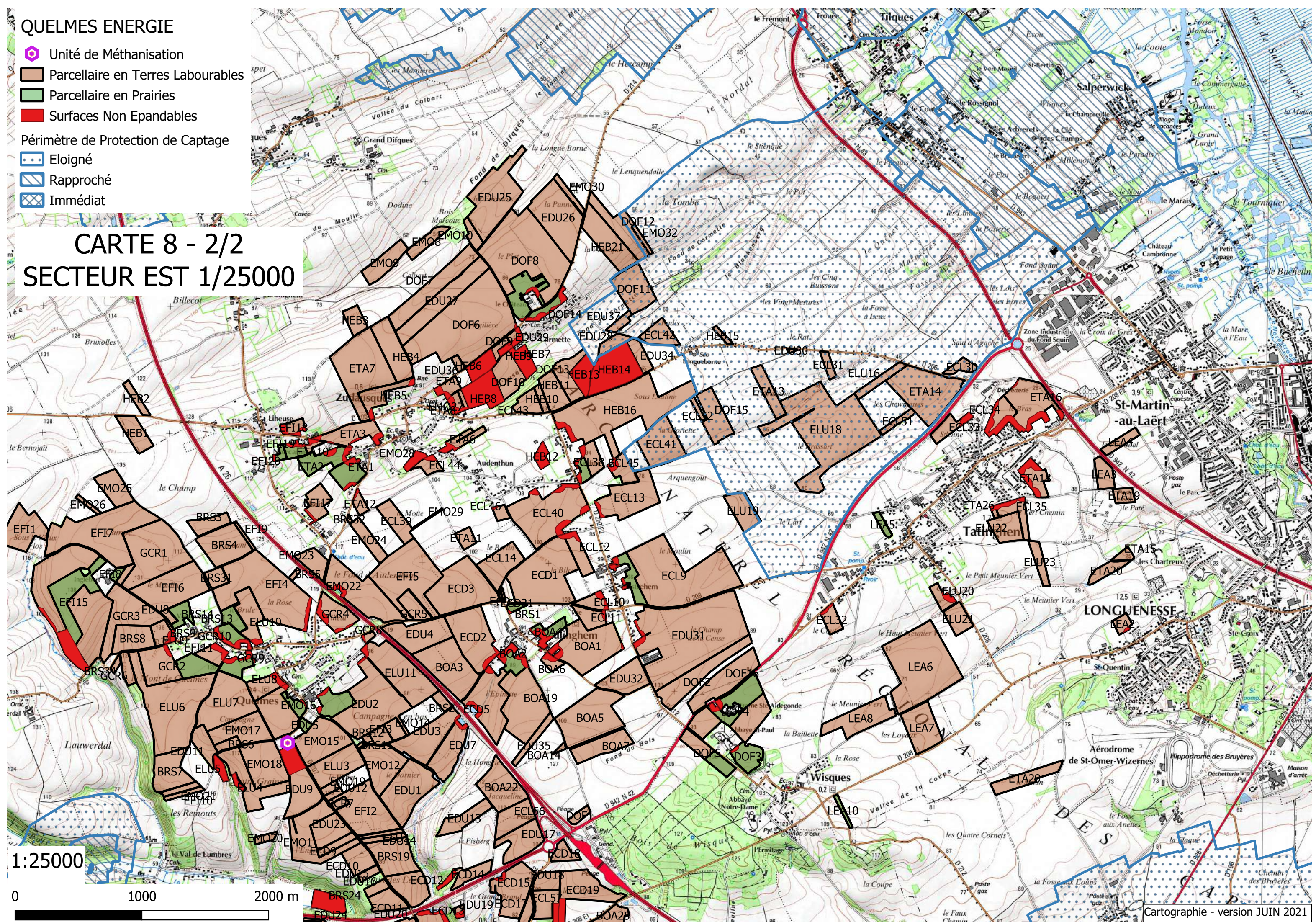
1:25000

0 1000 2000 m

QUELMES ENERGIE

-  Unité de Méthanisation
-  Parcellaire en Terres Labourables
-  Parcellaire en Prairies
-  Surfaces Non Eposables
-  Périimètre de Protection de Captage
-  Eloigné
-  Rapproché
-  Immédiat

CARTE 8 - 2/2 SECTEUR EST 1/25000



1:25000
0 1000 2000 m